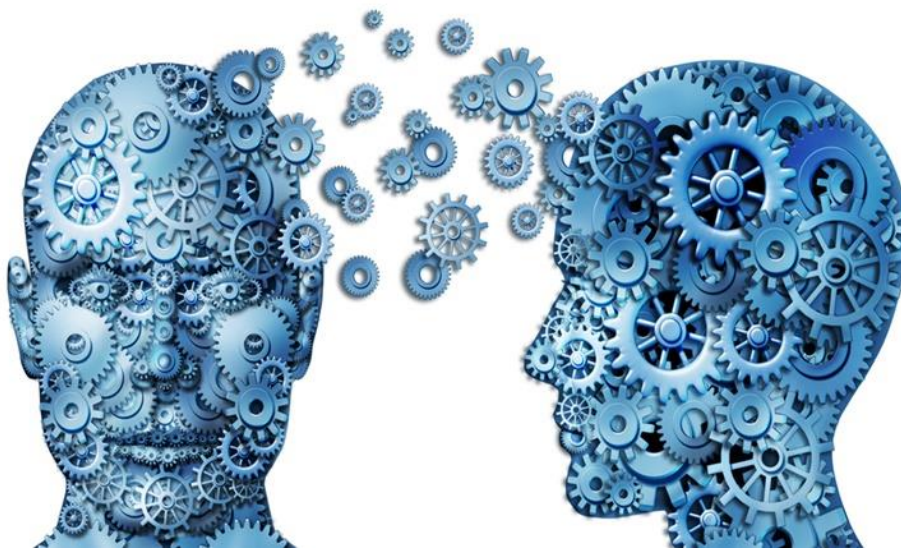


WORLD AFFAIRS: PSYCHOLOGY



Team Leader (World Affairs): Mrs S McEvoy
Teacher: Mrs L Crosbie

GCSE PSYCHOLOGY

Ever wondered why? Then psychology is for you! Psychology is the scientific study of the human mind, behaviour and experience. Psychologists carry out research to investigate the way people think, behave and respond to others. Because the subject matter is people, it is applicable to virtually all career paths and will enrich your understanding of yourself and others and the mental processes and experiences which make us who we are. This course will allow you to study a wide variety of topics that will make you think very differently about such things as memory, personality, and social influence, and how these impact on our lives. Among other things, GCSE Psychology allows you to develop your understanding of human behaviour; explore non-verbal communication, analyse how learning takes place, and examine the differences between males and females; acquire the skills used to analyse and study human behaviour.

What will you learn in Years 10 and 11:

Across both years you will learn all about Psychology using mini topics that include:

- Criminal Psychology,
- Development,
- Psychological problems,
- Memory,
- Social Influence,
- Research Methods,
- Sleep & Dreaming.

Assessment:

Unit 1 Studies and Applications in Psychology 1 (1hr 30 min) 50%

Unit 2 Studies and Applications in Psychology 2 (1hr 30min) 50%

The exams consist of short & medium answer questions and at least 1 x 13mark question.

Where could GCSE Psychology lead?

Psychology is a highly regarded qualification by both universities and employers. It is particularly useful for pursuing careers in medical disciplines, business and social sciences. It links well with AS and A2 Levels in Psychology, Sociology, Biology, Health and Social Care, Sport, Business Studies and English.